

Upcoming Applications

Extraction of DNA and RNA from FFPE tissues

Extraction of DNA and RNA from fresh/frozen tissues

Extraction of Total RNA from cells and tissues

Extraction of miRNA from body fluid

Extraction of nucleic acid from large volume (5mL) of whole blood **MagDEA Dx LV**

Instrument compatibility magLEAD 5bL

MagDEA Dx LV is a nucleic acid extraction reagent developed for automated large volume extraction/purification systems.

Features of MagDEA Dx LV

- Capable of extracting nucleic acid from large volume (5mL) of whole blood
- Only takes about 70 minutes for extraction
- Reagent management (Lot, expiration date, etc.) by QR code



Specifications

	MagDEA Dx SV	MagDEA Dx LV
Extraction sample volume	200μL or 400μL	5mL
Elution volume	50μL, 100μL, 200μL	1mL
Sample type	whole blood, plasma, serum, urine, swab, CSF	whole blood
Extraction time	within 25 minutes	about 70 minutes
Instruments	magLEAD 6gC, magLEAD 12gC geneLEAD series	magLEAD 5bL
Disposables	magLEAD consumable kit (Cat #: F4430) geneLEAD Consumable set (Cat #: F2100-002)	BT-20 Tip & Piercer Assay 129 (Cat #: F7230)
Test / kit	48 tests / kit	10 tests / kit



●For customers in Asia / Pacific
Precision System Science Co., Ltd.
 88 Kamihongou, Matsudo-shi, Chiba 271-0064, Japan
 Tel: +81-47-303-4801 Fax: +81-47-303-4811
 URL: <http://www.pss.co.jp>
 E-mail: service@pss.co.jp

●For customers in North / South America
Precision System Science USA, Inc.
 Tel: +1 (925) 960-9180 / FAX: +1 (925) 960-9184
 E-mail: contact@pssbio.com

●For customers in Europe / Africa / Middle East
Precision System Science Europe GmbH
 Tel: +49 (0) 6131 6966 468 / FAX: +49 (0) 6131 6966 469
 E-mail: contact-psse@pss.co.jp

The performance, specifications and appearance of products described in this catalogue are subject to change without prior notice.

PSS-Leaf_MagDEA_Dx-E-2015.12.Rev001

CE/IVD Approved

Universal Nucleic Acid Extraction Chemistry

MagDEA Dx is the solution for next generation genetic test systems

Magtration Technology Platform

Pre-packed nucleic acid extraction reagent for genetic tests

MagDEA Dx

Produced by  Precision System Science Co., Ltd.



magLEAD 6gC



magLEAD 12gC



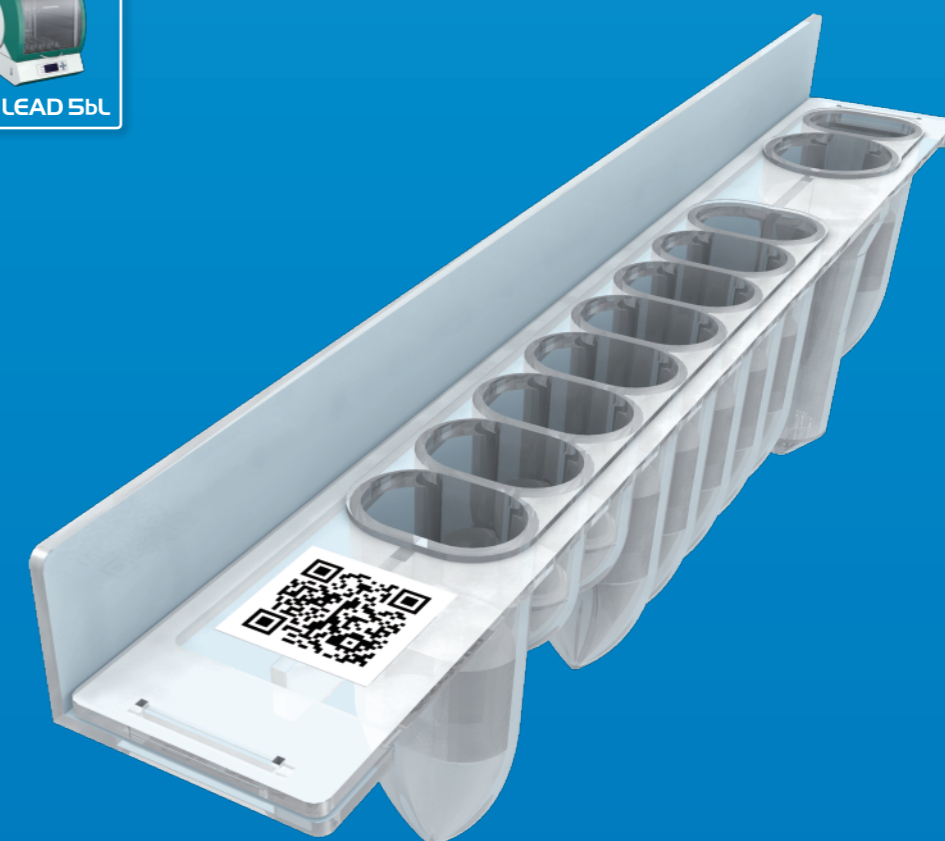
magLEAD 5bL



geneLEAD I



geneLEAD XI plus

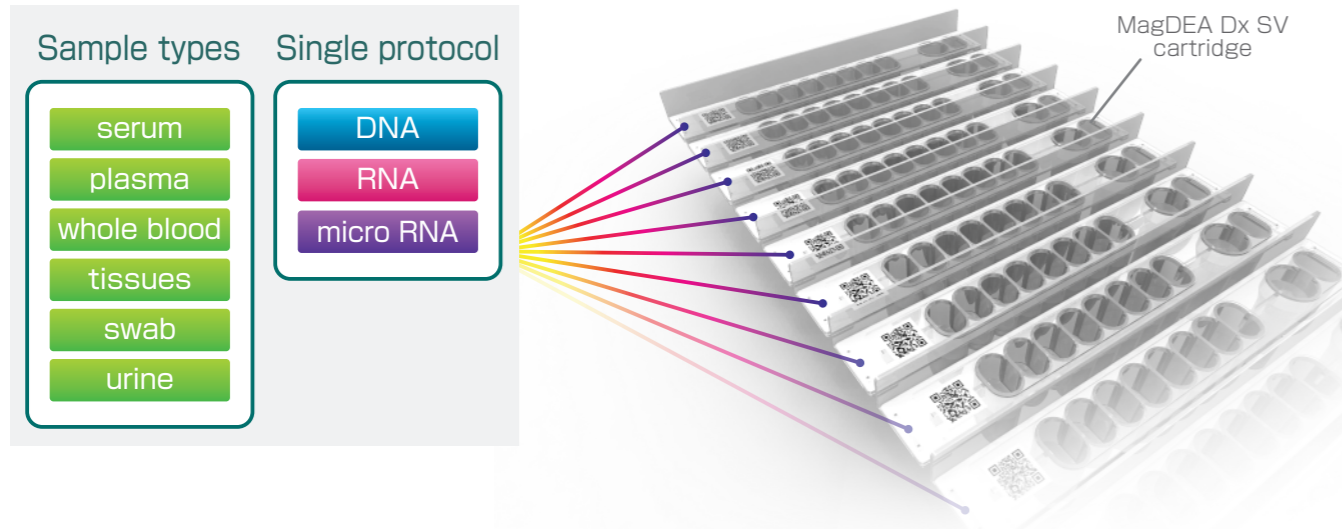


Nucleic acid extraction reagent MagDEA Dx series

Instrument Compatibility geneLEAD series, magLEAD 6gC, magLEAD 12gC, magLEAD 5bL

MagDEA Dx chemistry

Universal design Batch processing



MagDEA Dx is a nucleic acid extraction reagent developed with fully automated systems in mind. All extraction reagents come sealed in cartridges with everything including magnetic particles needed for extraction of nucleic acid (DNA/RNA). By combining with PSS' Magtration Platforms, preparation of high quality nucleic acids is simple, efficient and accurate.

Current instrument line with dedicated MagDEA Dx Chemistry include;

MagDEA Dx SV for magLEAD 6gC, magLEAD 12gC and geneLEAD series, and MagDEA Dx LV for magLEAD 5bL. These products are designed in accordance with the European IVD Directive (98/79/EC).

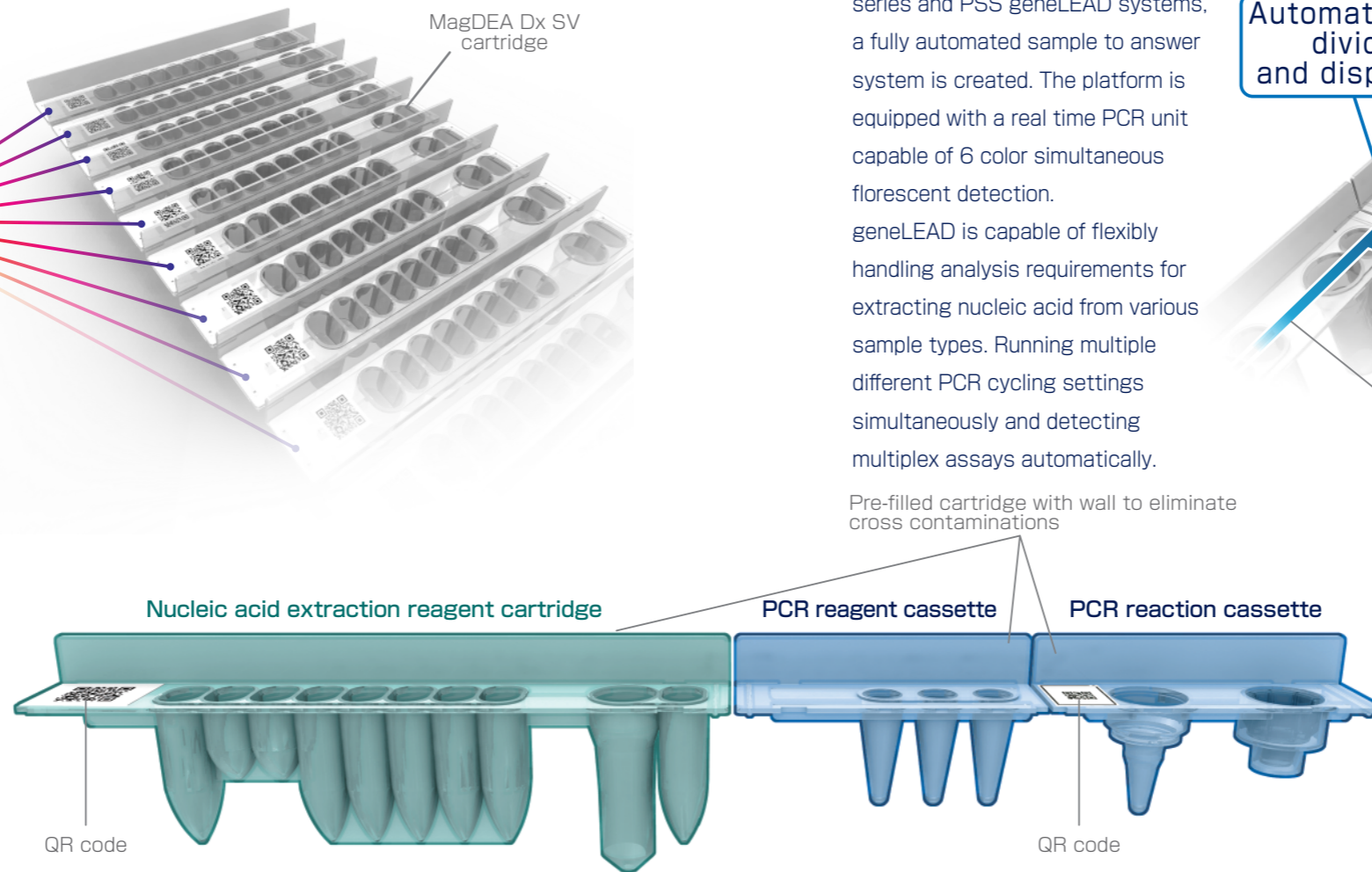
Features of MagDEA Dx SV Extractions of nucleic acid from different sample types using a single protocol.

Extractions can be done within 25 minutes.

Capable of nucleic acid extraction from various sample types using single protocol. (nucleic acid from whole blood, serum, plasma, urine, swab and CSF)

Extraction from 200 or 400µl sample and elutions from 50, 100, and 200µl.

Capable of managing reagent information (Lot, expiration date, etc.) by QR code.



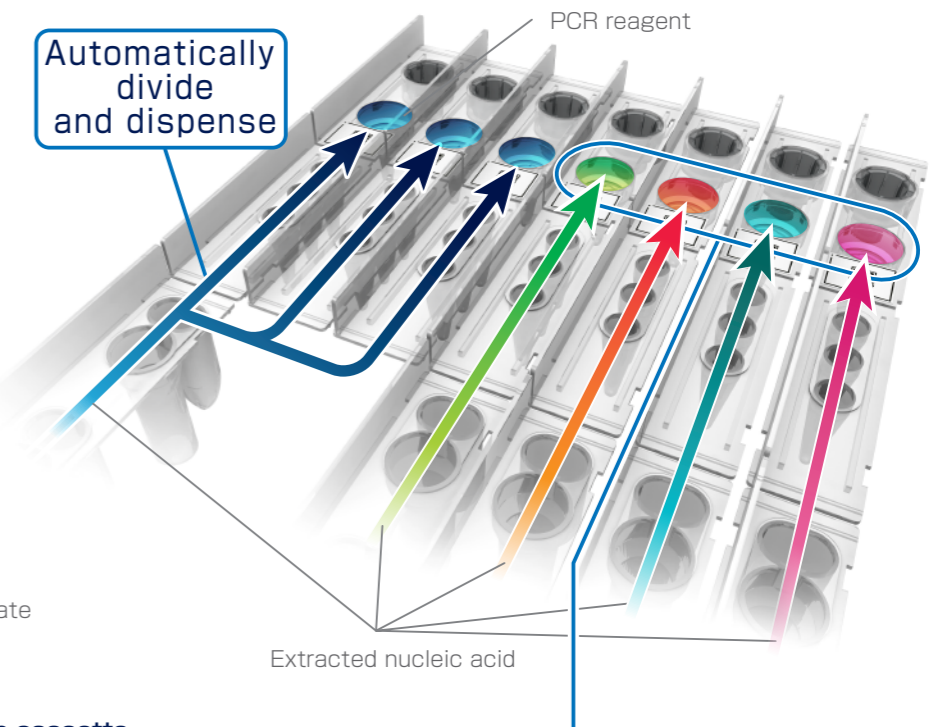
Fully automated sample to result PCR system

Instrument Compatibility geneLEAD series

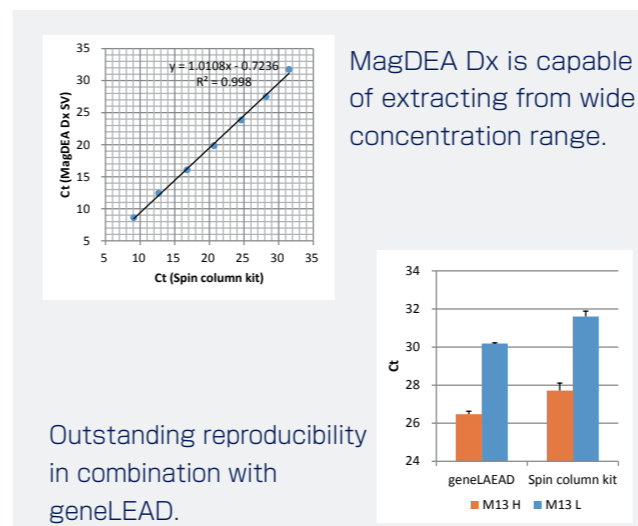
MagDEA Dx + geneLEAD

Each lane Independently controlled PCR & 6 color detection

With the combination of MagDEA Dx series and PSS geneLEAD systems, a fully automated sample to answer system is created. The platform is equipped with a real time PCR unit capable of 6 color simultaneous fluorescent detection. geneLEAD is capable of flexibly handling analysis requirements for extracting nucleic acid from various sample types. Running multiple different PCR cycling settings simultaneously and detecting multiplex assays automatically.



Pre-filled cartridge with wall to eliminate cross contaminations



Capable of simultaneous runs of multiple different PCR cycles.

Detection	Target	PCR Block #	PCR Protocol
Hyb probe	A (DNA)	1, 5, 9	50 °C for 2 min 93 °C for 2 min 93 °C for 5 sec 56 °C for 40 sec 72 °C for 15 sec
SYBR	B (DNA)	2, 6, 10	95 °C for 30 sec 95 °C for 5 sec 60 °C for 30 sec
Taqman	C (RNA)	3, 7, 11	50 °C for 10 min 95 °C for 5 min 95 °C for 5 sec 60 °C for 30 sec
Taqman	D (DNA)	4, 8, 12	50 °C for 10 min 95 °C for 5 min 95 °C for 5 sec 60 °C for 30 sec

geneLEAD XII PCR block

geneLEAD Amplification Plot (ch1)